

Configure automatic login for users

Last Modified on Friday, 01-May-2026 11:00:38 BST

Overview

This article explains how to configure automatic login for MindView users by embedding the license key during installation. This can be done using an administrative installation or silent deployment.

Administrative Installation

An administrative installation allows you to embed the license key and create a deployment-ready installation source.

Steps:

1. Press **Windows + R** to open the Run dialog
2. Click **Browse** and locate the MindView installer
3. Add the /a parameter to the installer path

Example:

```
C:\downloaded files\mindview9_<build>.exe /a
```

4. Click **OK** to start the Administrative Installation Wizard

During setup, you can define:

- Installation location (server image)
- Default user name and company
- License key (used for automatic login)
- (Optional) Enable simplified interface for younger students

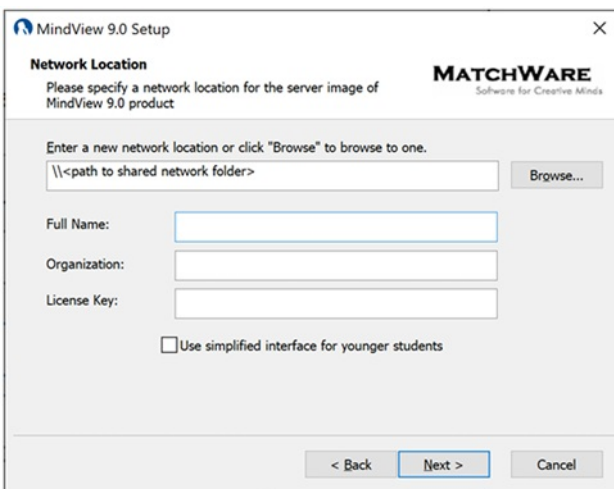


Figure 1 – Administrative Installation of MatchWare MindView 9

Note:

Make sure all required dependencies are installed beforehand (see system requirements).

Extracting Installation Files

You can extract the .msi and .cab files using the /extract command.

Steps:

1. Press **Windows + R**
2. Locate the MindView installer
3. Add the /extract parameter

Examples:

Extract to the same folder:

```
c:\temp\mindview9_<build>.exe /extract
```

Extract to a different folder:

```
c:\temp\mindview9_<build>.exe /extract:c:\temp\msipackage
```

Important:

The destination folder must already exist—it will not be created automatically.

Silent Installation

You can perform a silent installation using the Windows Installer (msiexec) command.

Example:

```
<path to installer>\msiexec.exe /i setup.x64.msi /qn SN="xxxx-xxxx-yyyy-yyyy"
```
