

Network installation

Last Modified on Friday, 12-Dec-2025 10:30:11 GMT

You can either set up a central "Administrative Installation" on your network or simply extract the core setup file (the .msi) for use with your existing deployment tools.

Option 1: Creating an Administrative Installation (Network Source)

This approach extracts a **complete** source image of the application to a network location, ready for your workgroup to access.

1. **Open the Command Prompt:** Click **Start**, then choose **Run** (or press the Windows key + R).
2. **Locate the File:** Use the **Browse** button to find the downloaded MindView installation package (the `.exe` file).
3. **Run the Command:** After the path to the installation file, add the command `/a //`
 - *Example for MindView 9:* `C:\downloaded files\mindview9_<build>.exe /a //`
4. **Confirm and Launch:** Click **OK** to launch the **Administrative Installation Wizard**.

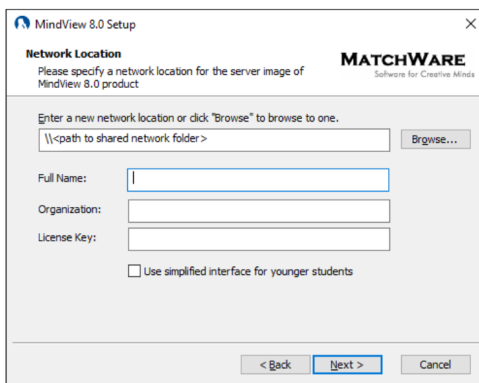


Figure 1 – Administrative Installation of MatchWare MindView 8

Wizard Settings

The wizard will pop up and prompt you for a few key details. You are defining the default settings for every user!

- **Server Location:** Where on your network the MindView image will live.
- **User/Company Name:** The default name and company that will appear in the software.
- **(Optional) License Key:** Enter your key to skip the activation step for your users.
- **(Optional) Simplified Interface:** Check '**Use simplified interface for younger students**' if you want MindView to automatically use the easier mode.

Option 2: Extracting the Core Setup File

This is the **fastest** way to get the primary setup file and other components (the .cab files) if you plan to use a tool like Group Policies or another deployment system.

1. **Open the Command Prompt:** Click **Start**, then choose **Run**.
2. **Locate and Command:** Find the downloaded MindView installation package, and this time, add the command `/extract`
3. **Choose Your Destination:**
 - **Same Folder:** To extract the files right next to the original `.exe` : `c:\temp\mindview9_<build>.exe /extract`
 - **New Folder:** To put the files somewhere specific (like a deployment folder):
`c:\temp\mindview9_<build>.exe /extract:c:\temp\msipackage`
 - **Quick Tip:** Be sure to create your destination folder (e.g., `msipackage`) **before** running the command, as the system won't create it automatically!

Deployment: Pushing the Installation to Users

Once you have your administrative installation or your extracted `.msi` file, you can **powerfully** deploy it! This is the key to saving your team significant time.

You can push the installation to client computers using Group Policies or by running the command directly.

Silent Installation.

For a super-smooth, hands-off install, use the **silent install** option. This runs the setup in the background, so your users won't see any prompts or dialog boxes.

- **Command:** `msiexec.exe /i setup_X.msi /qn`

Setting a Default Language

If your package supports multiple languages, you can set the default language with an extra command, using a **transform** code. This ensures the correct language loads immediately for your users!

- **Command (Example for German):** `msiexec.exe /i setup_X.msi /qn TRANSFORMS=:1031`

Language	Code
Danish	1030
German	1031
English (Default)	1033
French	1036
Norwegian	1044
